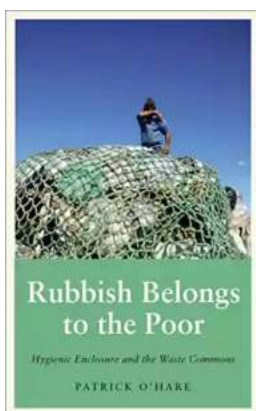


Hygienic Enclosure And The Waste Commons Anthropology Culture And Society

Have you ever wondered how our society deals with waste management? How is the waste disposed of in an environmentally friendly manner? In this article, we will explore the concept of hygienic enclosure and the waste commons, and their significance in anthropology, culture, and society.

Waste management is a critical aspect of modern society. As urbanization and industrialization continue to expand, the generation of waste becomes inevitable. However, the way we manage and dispose of waste determines its impact on the environment and public health.

The concept of hygienic enclosure refers to the containment and isolation of waste materials to prevent contamination and the spread of diseases. It involves the use of advanced technologies and infrastructure for proper waste disposal, treatment, and recycling.



Rubbish Belongs to the Poor: Hygienic Enclosure and the Waste Commons (Anthropology, Culture and Society) by Patrick O'Hare (Kindle Edition)

★★★★☆ 4.7 out of 5

Language : English
File size : 3441 KB
Text-to-Speech : Enabled
Screen Reader : Supported
Enhanced typesetting : Enabled
Print length : 226 pages



Hygienic enclosures, such as landfills, incinerators, and waste treatment plants, play a crucial role in ensuring that waste does not pose a threat to human health and the environment. These facilities are designed to minimize the release of harmful chemicals, minimize air and water pollution, and promote efficient waste management.

One of the key aspects of hygienic enclosure is the use of appropriate waste disposal methods. For example, landfills are engineered sites where waste is deposited in layers and covered with soil to minimize odor and reduce the risk of groundwater contamination. Incinerators, on the other hand, burn waste at high temperatures to convert it into ash and gas, minimizing its volume and potential harm.

However, the concept of hygienic enclosure is not without its controversies. Critics argue that it often leads to the concentration of waste in specific areas, often those with lower socio-economic status. This phenomenon has been termed as environmental racism, where marginalized communities bear the burden of waste disposal facilities.

Additionally, the waste commons is an important aspect to consider when discussing waste management. The waste commons refers to the collective responsibility of society to manage waste and ensure its proper disposal. It acknowledges that waste affects everyone and emphasizes the need for collective action to address the issue.

Anthropology plays a significant role in studying the cultural aspects of waste management. It explores how different societies perceive waste and develop cultural norms and practices around its disposal. For example, some cultures may have taboos regarding the handling of waste, while others may have traditional methods of recycling and reusing materials.

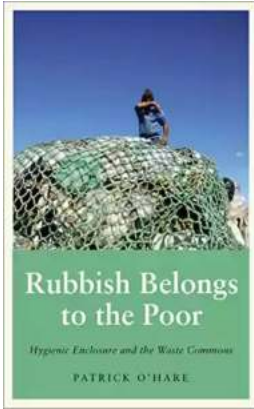
Understanding the anthropology of waste not only provides insights into societal attitudes but also aids in the development of effective waste management strategies. It helps policymakers and urban planners incorporate cultural perspectives into waste management policies, ensuring they align with the values and practices of the communities they serve.

Furthermore, waste management practices also reflect broader societal values and priorities. The way a society deals with waste can expose inequalities, consumption patterns, and environmental awareness. By studying waste management practices, researchers gain valuable insights into social, economic, and political dynamics within a given society.

Therefore, it is essential to recognize the significance of hygienic enclosure and the waste commons in anthropology, culture, and society. By understanding and addressing waste management issues through a multidisciplinary approach, we can strive towards sustainable solutions that promote both human well-being and environmental preservation.

, hygienic enclosure and the waste commons play critical roles in waste management within anthropology, culture, and society. The concept of hygienic enclosure ensures proper containment, treatment, and disposal of waste materials, protecting human health and the environment. Additionally, the waste commons emphasizes the collective responsibility of society in managing waste and developing sustainable practices. By studying the cultural aspects of waste management, we can create effective strategies that align with societal values and practices. Ultimately, addressing waste management challenges through a comprehensive approach is crucial for achieving a sustainable and healthy future.

Rubbish Belongs to the Poor: Hygienic Enclosure and the Waste Commons (Anthropology, Culture



and Society) by Patrick O'Hare(Kindle Edition)

★★★★☆ 4.7 out of 5

Language : English
File size : 3441 KB
Text-to-Speech : Enabled
Screen Reader : Supported
Enhanced typesetting : Enabled
Print length : 226 pages

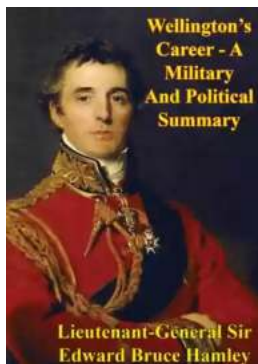


Rubbish. Waste. Trash. Whatever term you choose to describe the things we throw away, the connotations are the same; of something dirty, useless and incontrovertibly 'bad'. But does such a dismissive rendering mask a more nuanced reality?

In *Rubbish Belongs to the Poor*, Patrick O'Hare journeys to the heart of Uruguay's waste disposal system in order to reconceptualize rubbish as a 21st century commons, at risk of enclosure. On a giant landfill site outside the capital Montevideo we meet the book's central protagonists, the 'classifiers': waste-pickers who recover and recycle materials in and around its fenced but porous perimeter. Here the struggle of classifiers against the enclosure of the landfill, justified on the grounds of hygiene, is brought into dialogue with other historical and contemporary enclosures - from urban privatizations to rural evictions - to shed light on the nature of contemporary forms of capitalist dispossession.

Supplementing this rich ethnography with the author's own insights from dumpster diving in the UK, the book analyses capitalism's relations with its material surpluses and what these tell us about its expansionary logics, limits and

liminal spaces. Rubbish Belongs to the Poor ultimately proposes a fundamental rethinking of the links between waste, capitalism and dignified work.



Wellington's Incredible Military and Political Journey: A Legacy That Resonates

When it comes to military and political history, few figures have left a mark as profound and influential as Arthur Wellesley, Duke of Wellington. Born on May 1, 1769, in...



10 Mind-Blowing Events That Take Place In Space

Welcome to the fascinating world of outer space, where unimaginable events unfold and capture our wildest imagination. From breathtaking supernovas to...



The Astonishing Beauty of Lanes Alexandra Kui: Exploring the Enigmatic World of an Extraordinary Artist

When it comes to capturing the essence of beauty and emotion through art, few artists can match the extraordinary talent of Lanes Alexandra Kui. With her unique style,...



Unlock the Secrets of Riding with a Twist Of The Wrist

Are you a motorcycle enthusiast? Do you dream of being able to ride with skill, precision, and confidence? Look no further, as we are about to reveal the key...



The Ultimate Guide to An Epic Adventure: Our Enchanting Journey to the Jubilee

Are you ready for a truly mesmerizing and unforgettable experience? Join us on a journey like no other as we take you through our thrilling trip to the Jubilee, an...



The Last Great Revolution: A Transformation That Shaped the Future

Throughout history, numerous revolutions have rocked the world, altering the course of societies and leaving an indelible mark on humanity. From the American Revolution to the...



The Cinder Eyed Cats: Uncovering the Mysteries of Eric Rohmann's Enchanting World

Have you ever come across a book that takes you on a magical journey, leaving you spellbound with its captivating illustrations and intriguing storyline? Well, look no...



Discover the Ultimate Spiritual Solution to Human Degeneration and Renew the World from Evil!

In today's fast-paced, modern world, it seems that human degeneration and the presence of evil continue to spread, wreaking havoc on our mental, emotional, and...